



Pentaho Dashboards

Copyright © 2009 Pentaho Corporation. Redistribution permitted. All trademarks are the property of their respective owners.

For the latest information, please visit our web site at www.pentaho.com

Pentaho Dashboards Overview

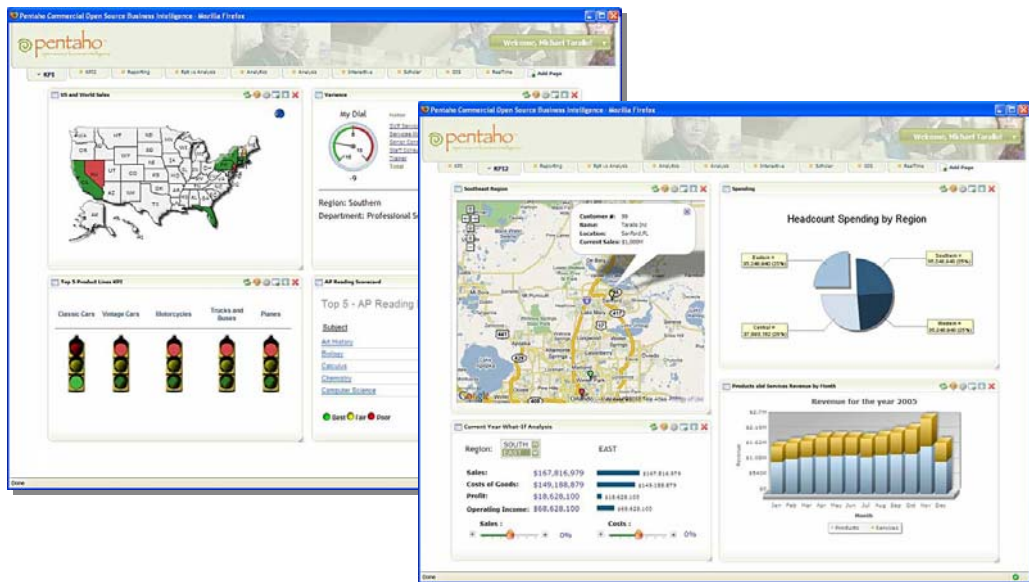
Pentaho Dashboards provide immediate insight into individual, departmental, or enterprise performance. By delivering key metrics in an attractive and intuitive visual interface, Pentaho Dashboards give business users the critical information they need to understand and improve organizational performance.

With Pentaho Dashboards, every user gets immediate visibility into important metrics. Example metrics might include:

- Are inventory carrying costs for this month higher or lower than last month, and are they within the acceptable range?
- Is our department meeting its goals for customer satisfaction?
- Are we meeting targets for profitability?
- Are product return rates higher at our store than other stores? Are they trending in the right direction?

Pentaho Dashboards delivers this visibility by providing:

- Rich, interactive visual displays so that business users can immediately see which business metrics are on track, and which need attention
- Integration with Pentaho Reporting and Pentaho Analysis so that users can drill to underlying reports and analysis to understand what factors are contributing to good or bad performance
- Portal integration to make it easy to deliver relevant business metrics to large numbers of users, seamlessly integrated into their application
- Integrated alerting to continuously monitor for exceptions and notify users to take action



Pentaho Dashboards provide immediate visibility into individual, departmental, or enterprise performance.

Pentaho Dashboards Enterprise Edition

Pentaho Dashboards Enterprise Edition extends Pentaho's best-in-class open source business intelligence (BI) capabilities with additional software and services designed to help you and your organization:

- **Achieve BI success**
- **Save time, resources, and money**
- **Mitigate risk**

Achieve BI success

What makes the difference between success and failure in business intelligence or data warehousing projects? There is ample evidence from IT professionals, consultants, and industry analysts that success or failure with business intelligence is often driven far more by “people and process” issues rather than technology. Poor planning, lack of commitment, inadequate resources or skill sets, and inability to deliver initial results quickly can doom a BI project regardless of the selected software products and technology. While open source software is rapidly transforming the IT landscape and has provided new levels of flexibility and freedom for customers, open source software alone does not address the traditional pitfalls of BI projects. Pentaho Dashboards Enterprise Edition provides the product capabilities and value-added services to help you deliver a successful BI project for your organization, including consultative support and product expertise, software maintenance, management and monitoring tools, and more.

Save Time, Resources, and Money

Even large organizations have fewer IT resources than they would like, and they strive to get the most out of their investments in time, people, and technology. There are numerous public examples of Pentaho customers who have realized the Total Cost of Ownership (TCO) advantages of commercial open source BI from Pentaho, recognizing that investing in a relationship with Pentaho saves time, resources, and money not just in the long-term, but in the *short term* as they initiate BI projects. “Going it alone” with free BI software not only increases your risk of failure, it turns out to be more expensive. Pentaho Dashboards Enterprise Edition delivers critical benefits like stabilized software, enhanced deployment capabilities, direct access to product expertise, and committed response times to help you save time, resources, and money.

Mitigate Risk

Business intelligence risk comes in many shapes and forms. Risk of project failure, risk of late delivery, risk of going over budget, and legal risk as well. Beyond providing the software enhancements and services to reduce project risk, Pentaho provides a lower-cost model for enterprise-class business intelligence software that reduces budget risk by eliminating large, up-front software license fees. Pentaho Dashboards Enterprise Edition also includes legal protection to minimize your company's risk and exposure to potential legal issues related to intellectual property in open source software.

Pentaho Dashboards Enterprise Edition Features

Pentaho Dashboards Enterprise Edition allows you to deploy in production with confidence, security, and far lower total cost of ownership than proprietary alternatives. Pentaho Dashboards Enterprise Edition provides additional capabilities including comprehensive professional technical support, software maintenance, enhanced functionality, certified software functionality, product expertise, and the best software assurance program in the industry.



Software and Services	Community Edition	Enterprise Edition
Dashboards	Open Source	Certified
Business Intelligence Platform	Open Source	Certified
Community Forums Interaction	✓	✓
Community Web Documentation (wiki)	✓	✓
Professional Support		
• Telephone support (toll-free)		✓
• E-mail support		✓
• Service Level Agreement		✓
• Unlimited support cases		✓
Software Maintenance		
• Software maintenance	By in-house staff	✓ By Pentaho Engineers
• Patch releases		✓
• Fixes included in future releases		✓
Enhanced Functionality		
• Pentaho Dashboard Designer		✓
• Pentaho Enterprise Console		✓
• Single Sign-On		✓
• Streamlined security configuration		✓

• Application diagnostics		✓
• Repository utilities		✓
• Lifecycle management		✓
• Audit reports		✓
• Automated content expiration		✓
• Clustering		✓
• Performance monitoring		✓
Certified Software		
• Stabilized software		✓
• Managed release cycle		✓
• Optimized builds		✓
Product Expertise		
• Professional documentation		✓
• Knowledge base		✓
• Consultative support		✓
• Remote assistance packages		✓ Optional Add-On
• Installation/configuration packages		✓
• Design and integration packages		✓
• Troubleshooting and optimization packages		✓
• Enterprise Edition online forum		✓
• Web based training		✓ Optional Add-On
Software Assurance		
• Intellectual Property Indemnification		✓
• Warranty for services		✓

For more information on the features and benefits of Pentaho's Enterprise Editions, please see the [Pentaho BI Suite Enterprise Edition brochure](#).

Pentaho Dashboards Feature Details

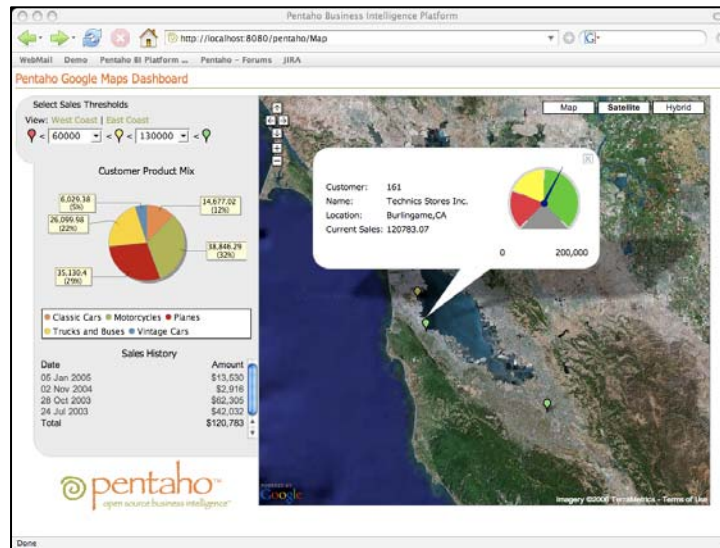
Flexible Deployment Options

- Out-of-the-box deployment via the Pentaho User Console
- Java components for easy integration into custom solutions using Java Objects or Java Server Pages (JSPs)
- Integrated with the rest of the Pentaho BI Suite to provide a complete BI platform, and integrated reporting and analysis
- AJAX components to provide high-performance, customizable dashboard extensions

Easy Information Access by Role or Subjects

- Provides single-screen access to metrics, related reports and analysis and other content.
- Enables role and subject-specific dashboards to be created and shared. For example, a role-specific "Purchase Manager Dashboard", or a subject-specific "Supply Chain Dashboard".
- Role-based filters automatically tailor content for specific business users. For example, each manager may only see information relating to their own department.

- On-screen filter controls enable users to choose what they're interested in and have content automatically updated. For example - a user may select a geographic region and/or product combination to filter by.
- Drill-down from one dashboard to another enables users to navigate to more detail. For example, by clicking on a gauge showing Labor Cost a user can bring up another dashboard with an interactive spreadsheet that enables them to find out more information.
- Dashboard linking makes it easy to move from one dashboard to another in context. For example, by clicking on a gauge showing "labor cost", a user can move to another dashboard that breaks down metrics that contribute to labor costs.
- Integrate other content via frames, URLs, or AJAX components.



Pentaho Dashboards provide rich visualization and can be extended using AJAX.

Security and Compliance

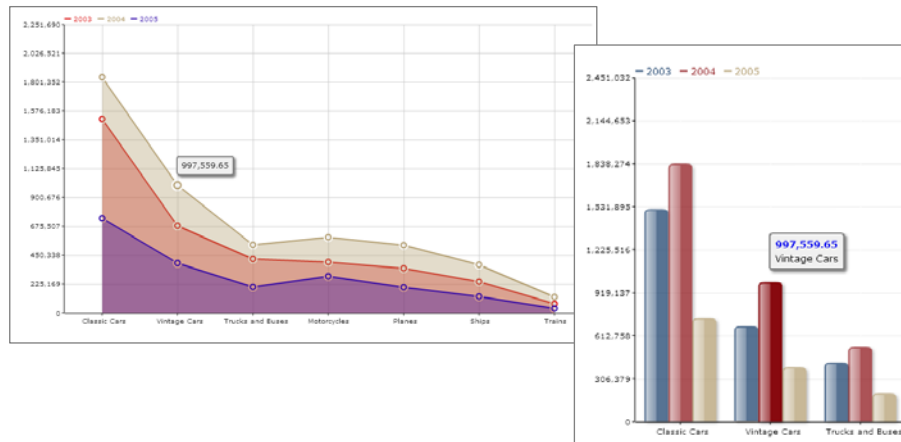
- Provides role-based security and business rules.
- Supports Java Single Sign-On/JOSSO and Lightweight Directory Access Protocol (LDAP) to integrate with existing enterprise security.
- Captures comprehensive audit trail to monitor metric usage, user access, performance and more.

Modern, Standards-based Architecture

- 100% J2EE server components for scalability, portability, and integration
- Open, XML-based repository
- JDBC 2.0 compliant
- Supports connectivity via JDBC to proprietary databases including Oracle, IBM DB2, Microsoft SQL Server, NCR Teradata and more
- Supports connectivity via JDBC to popular open source databases including MySQL, PostgreSQL, EnterpriseDB, and others
- All components exposed via Web Services for easy integration into Service Oriented Architectures (SOAs)

Rich Graphical Displays

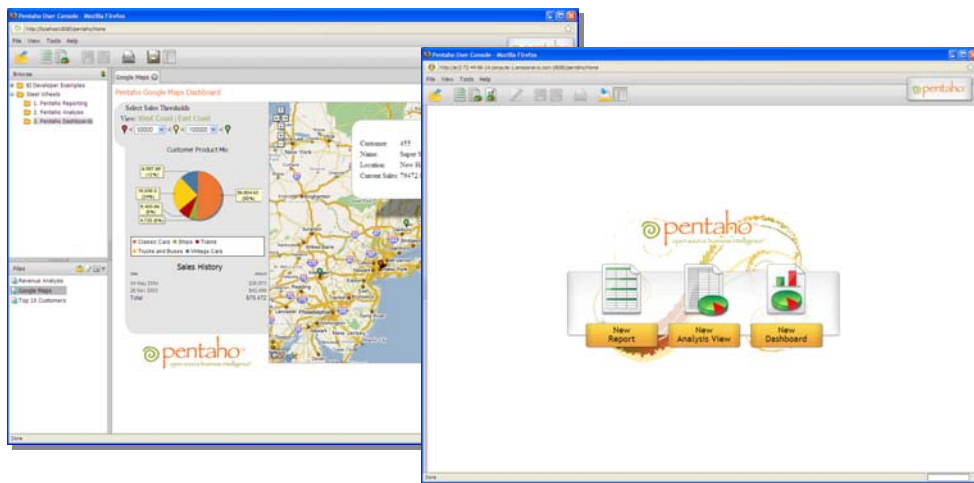
- Web-based dashboards
- Adobe Flash-based visualizations
- Custom front-ends including Scalable Vector Graphics (SVG) displays
- Interactive, spreadsheet style data grids
- Interactive, drillable multidimensional charts
- Graphical data navigation including drilling on gauges and charts
- Integration with Google Maps for interactive, visual displays of geographical information



Adobe Flash-based visualizations engage users and enhance the display of KPIs.

Pentaho User Console

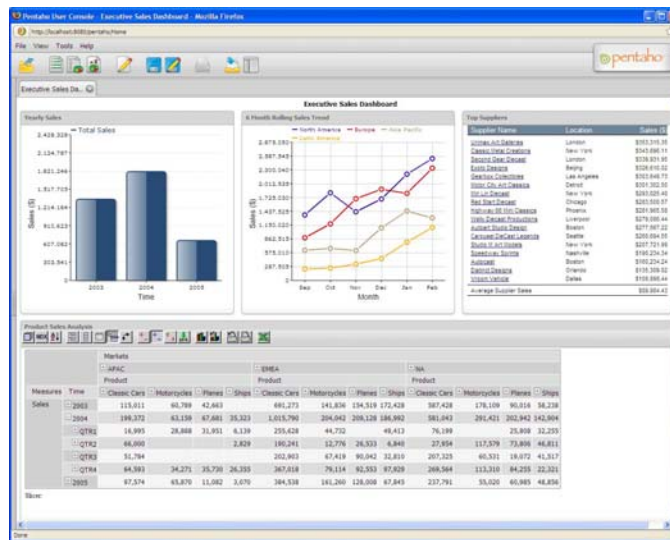
- Out-of-the-box, intuitive thin-client interface for central access to all BI content
- Create new ad hoc reports and analysis views in a few simple clicks
- Explorer-style interface for easy navigation of BI content
- Share reports, analysis views, and dashboards with others
- Schedule reports for reliable, on-time delivery of information



Pentaho User Console provides central, secure, and easy access to business information.

Pentaho Dashboard Designer

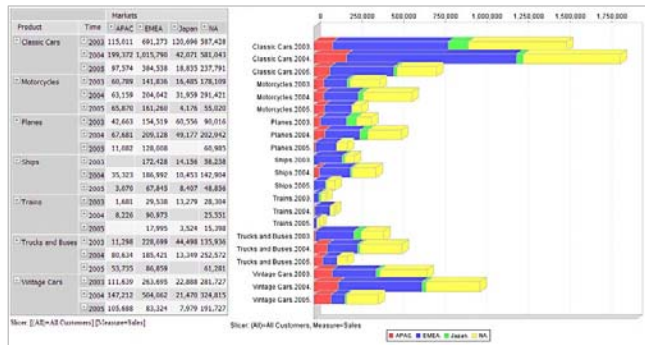
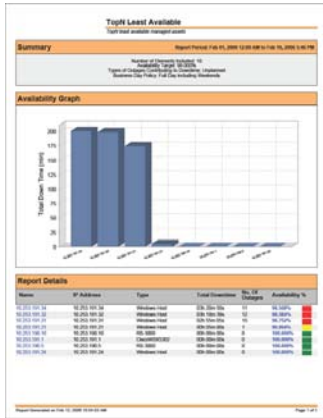
Seamlessly integrated into the Pentaho User Console, Pentaho Dashboard Designer lets business users quickly and easily assemble personalized dashboards to monitor organizational metrics and KPIs. By selecting from a library of templates and design themes, users can incorporate their favorite reports, graphs, and interactive analysis views in a few simple clicks to create a comprehensive view of the information they need most. Pentaho Dashboard Designer also lets business users create new tabular and graphical data visualizations from scratch by utilizing Pentaho's centralized metadata layer to query data in business terms without knowledge of the underlying database structures or SQL. Built-in filter controls let users define the level of information to display on the dashboard, synchronizing all dashboard metrics to a specific region, time period, or other user selection. The power and flexibility of Pentaho's BI Platform enables secure drill-through to underlying detail information. The self-service dashboard capabilities in Pentaho BI Suite Enterprise Edition empower business users and reduce dependency on IT.



Pentaho Dashboard Designer lets business users quickly and easily assemble personalized dashboards.

Integration with the Pentaho BI Suite

- Comprehensive auditing of user activity, performance, and data access
- Rich reporting via integration with Pentaho Reporting
- Drillable dashboards allowing users to drill from a metric into Pentaho Analysis
- Integrated security, scheduling, portal integration, and metadata



Through integration with the Pentaho BI Suite, Pentaho Dashboards allow business users to drill from KPIs into underlying reports and analysis.