



What's New in Pentaho BI Suite Enterprise Edition Version 3.5?

Copyright © 2009 Pentaho Corporation. Redistribution permitted. All trademarks are the property of their respective owners.

For the latest information, please visit our web site at www.pentaho.com

Last Modified on August 31, 2009

Contents

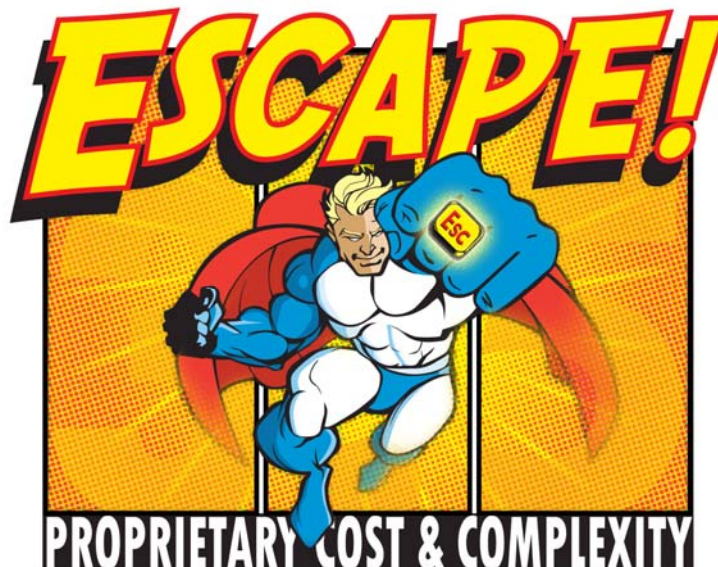
- Purpose of This Document 3
- Pentaho BI Suite Enterprise Edition Version 3.5 Overview 3
 - Design 3
 - Deploy 3
 - Escape 3
- Design 4
 - Pentaho Report Designer 4
 - Streamlined Report Wizard 4
 - Design and View Prompted Reports 4
 - Side-by-side Sub-reports 5
 - Report Tabs, Flexible Layout Controls, and Interactive Preview Mode 5
 - Connect to Pentaho Data Integration 5
 - New Report Viewer 5
 - Pentaho Dashboard Designer 6
 - Chart Designer 6
 - Interactive Data Grids 6
 - Query Editor 6
- Deploy 7
 - Pentaho Reporting Embedded Edition 7
- Escape 7
 - The Escape Program 7

Purpose of This Document

This document is intended for users who have a working familiarity with the capabilities of Pentaho BI Suite Enterprise Edition. This document will focus on reviewing new capabilities delivered in Pentaho BI Suite Enterprise Edition Version 3.5. It is not intended to be a complete review of Pentaho's functional capabilities.

Pentaho BI Suite Enterprise Edition Version 3.5 Overview

Pentaho BI Suite Enterprise Edition Version 3.5 extends Pentaho's commercial open source BI capabilities providing a comprehensive and fully supported solution allowing businesses of all sizes to cost-effectively deploy business intelligence. Version 3.5 includes new features and enhancements that make it efficient and easy to design pixel perfect reports and self-service charts and data grids for dashboards. Also, this release brings technical and packaging changes to enable broad use of Pentaho for embedded BI, and a first-of-its-kind migration program to address customer demands to move away from proprietary BI solutions.



Design

Design powerful reports quickly and easily with the new Pentaho Report Designer. And your end users can now create their own content for dashboards including interactive data grids and charts.

Deploy

Deploy embedded reports with Pentaho Reporting Embedded Edition, providing the technology, documentation, and pricing for rapid, low-cost delivery of rich, integrated reporting.

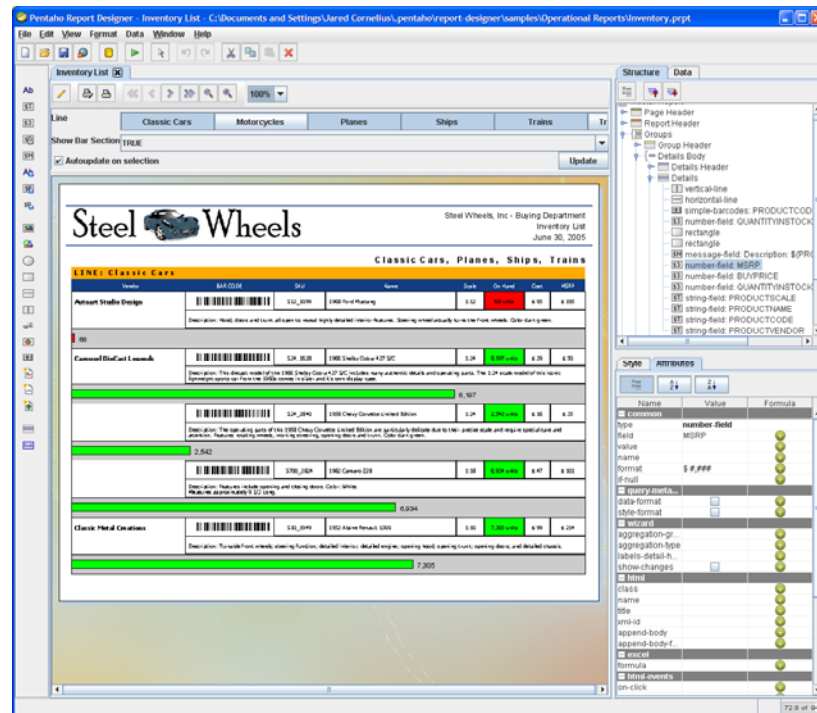
Escape

Escape the cost and complexity of proprietary BI with a first-of-its-kind, fixed-price, fixed-deliverable program to convert your proprietary reports to Pentaho Reporting.

Design

Pentaho Report Designer 3.5

Version 3.5 delivers a new report designer with loads of new features and enhancements that make it easier than ever for report authors to design powerful reports. The clean, streamlined interface provides quick access to commonly used report objects while maximizing design area and new functionality offers unmatched flexibility for displaying information.



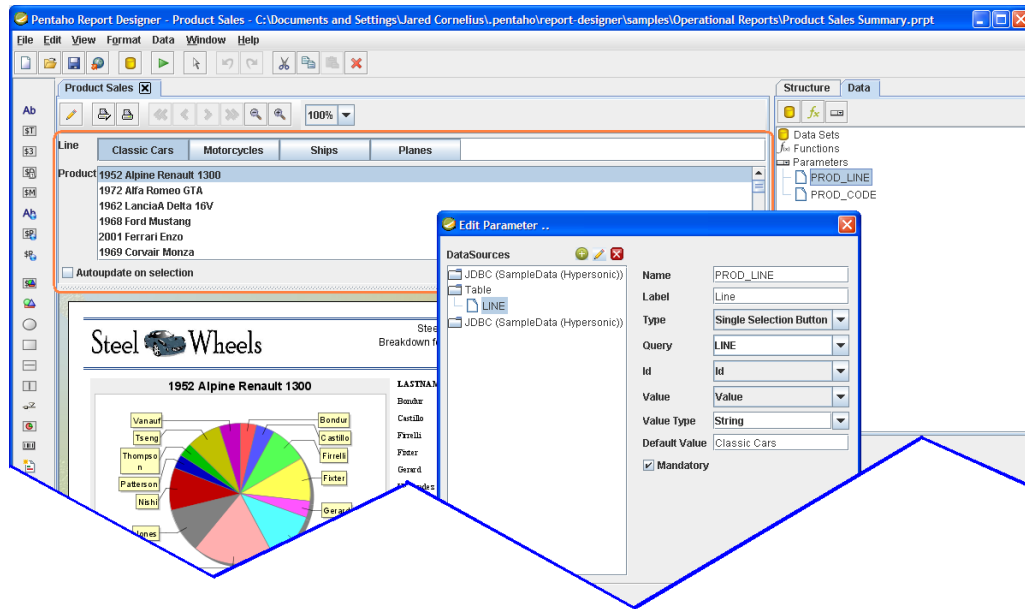
Design reports quickly and easily with Pentaho Report Designer 3.5.

Streamlined Report Wizard

A new integrated wizard lets report authors go from a blank canvas to a highly polished report in four simple steps: (1) Select a template, (2) connect to data and build query, (3) lay out fields and define report grouping, and (4) format fields and report totals. From there, design mode gives full control to fine-tune layout, add visualizations and further enhance the report. At any time, users can return to the wizard to make adjustments, and it will keep any changes and remember exactly where it left off.

Design and View Prompted Reports

Pentaho Report Designer 3.5 now gives report authors the ability to design and view user prompts directly from the report design environment. It also supports dynamic, cascading parameters where the value selected in one prompt drives the available items in another. New prompt controls including multi-selection buttons and a date picker make delivering intuitive user-controlled reports a breeze.



Create and preview user-prompted reports.

Side-by-side Sub-reports

Pentaho Report Designer 3.5 can access data from multiple data sources and display it anywhere on a report. New side-by-side sub-reports give complete control over content presentation letting authors combine information from one or many data sources and present summary charts alongside detailed information.

Report Tabs, Flexible Layout Controls, and Interactive Preview Mode

A new tabbed interface makes working with multiple reports and sub-reports quick and easy. Users can copy and paste objects between reports, including data sources, charts, data fields and more. New layout controls such as guidelines and snap-to options give users intuitive feedback while arranging objects on the report. A new interactive preview mode lets authors fine-tune the look and feel of the report without having to toggle back and forth between design and preview modes.

Connect to Pentaho Data Integration

Pentaho Report Designer 3.5 can now connect to Pentaho Data Integration transformations, preview output fields and stream results directly into the designer for real-time data integration and reporting. Report authors can build reports directly against data integration transformations without first staging the information in a single database.

New Interactive Report Viewer

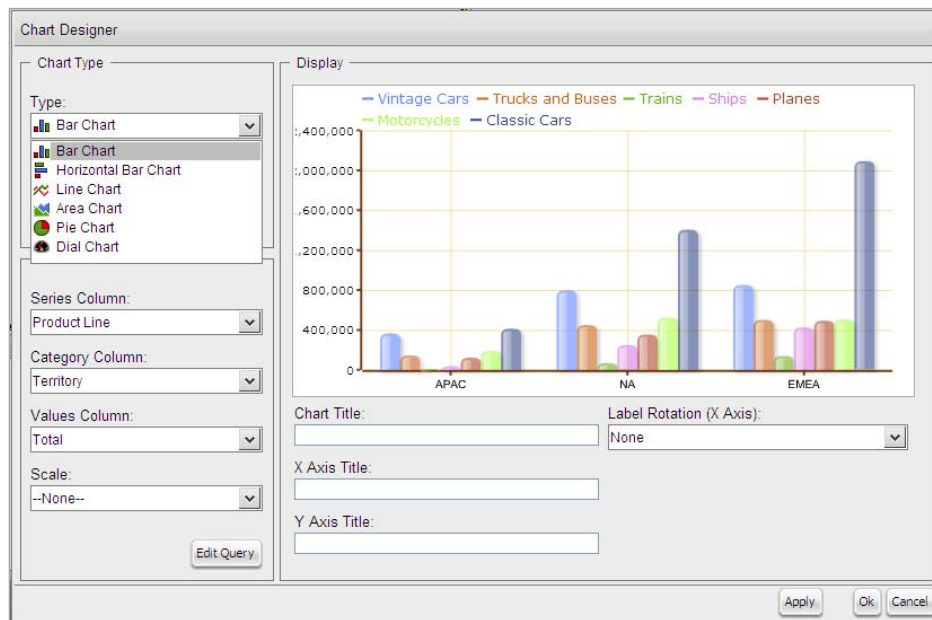
For business users accessing reports, the Pentaho User Console has been enhanced with a new report viewer that displays report prompts and output options on-screen with the report, letting users select from the available parameters and update filters. A new page controller also makes it easy to navigate long reports page-by-page or to jump to specific page numbers.

Pentaho Dashboard Designer 3.5

Pentaho Dashboard Designer 3.5 builds on Pentaho's self-service dashboard creation for business users providing the ability to create new tabular and graphical data visualizations from scratch in Pentaho's thin-client user console. Pentaho's centralized metadata layer allows business users to query data in business terms without knowledge of the underlying database structures or SQL.

Chart Designer

End-users creating dashboards can now add charts using an all new business-users chart designer. From directly inside Pentaho's Dashboard Designer, users can add attractive, Adobe Flash-based charts by selecting from a variety of charts types or dials. Users can customize the style of a chart by selecting from a range of themes, as well as tailor the chart title and axes labels.



Empower business users with a self-service dashboard chart designer.

Interactive Data Grids

A new integrated data grid provides dashboard users with an easy way to display query results and detail information alongside other Pentaho content. The interactive data grid lets users dynamically sort, re-order, and re-size columns on-the-fly.

Query Editor

Utilizing Pentaho's metadata layer, a new thin-client query editor makes building queries for charts and data grids fast and simple. Business users simply select which category of information to query and the specific details desired. The new query editor can also apply filters, sort information, and parameterize queries for user-prompted content.

Deploy

Pentaho Reporting Embedded Edition

Based on proven partner success and growing demand to embed BI into third-party applications for on-premise and SaaS deployment, Pentaho is now offering Pentaho Reporting Embedded Edition. From a technical perspective, Pentaho Reporting Embedded Edition now incorporates all of the resources required by a report including query information, images, layout, and templates into a single file, simplifying deployment and maintenance. Pentaho is now offering unlimited-use pricing for OEMs who want to embed and distribute Pentaho BI, with low-cost, royalty-free pricing and no per-cpu, per-user, or per-customer fees. Pentaho now also provides an embedding guide with step-by-step instructions for embedded deployment.

Escape

The Escape Program

Building on our public track record of successful customer migrations from proprietary BI solutions, Pentaho is now offering the Escape program to scale Pentaho's migration capacity while reducing migration costs for customers. Starting at \$5,000 for the first 25 reports, and for as little as \$100 per report with larger volumes, Pentaho's Escape program offers conversion from Actuate e.Reports, Brio, Cognos Impromptu, Crystal Reports, and Oracle Reports. Frustrated proprietary BI customers now have a proven, low-risk, low-cost path to commercial open source BI from Pentaho.